

# MatysOnBoard IRIDIUM - 9601

## MatysOnBoard SMART9601

### Marine Communications & Monitoring Solution

**MatysOnBoard** is a breakthrough marine communications and monitoring solution that provides yacht support services anytime, anywhere. More than just a tracking application, the state-of-the-art solution uniquely integrates a robust onboard wireless data communicator and a one-stop 24/7 contact center providing access to international yachting service providers.

**MatysOnBoard** facilitates safer and more efficient offshore yachting for commercial vessel operators and private yacht owners worldwide.

The **SMART9601** is a cost-effective solution for users whose main requirement is tracking and monitoring. The system utilizes the Iridium 9601 SBD only modem, providing full global coverage and fast response times.



## Key Capabilities

### Tracking

Automatic Web-based tracking with positions displayed on nautical charts

User-controlled tracking frequency

Fleet tracking and monitoring. No infrastructure required other than web access

### 24/7 Support Center

Distress signals trigger land based server confirmation and professional response

### Short Text Messaging

2-way free-text messaging

Pre-installed canned messages

### Matys Integrated Communicator

Designed for marine applications and proven at sea, this compact, Plug & Play unit incorporates Iridium 9601 SBD modem and GPS with straightforward user interface.

Automatic position reporting

2-way texting

Two easy-to-use alarm push buttons for level-1 and level-2 emergency response that automatically send out distress signals with vessel's ID and position.

# MatysOnBoard IRIDIUM - 9601

## Specifications

### Onboard System Components

MATYS integrated communicator

### Antennas

Iridium compact antenna with cable

GPS antenna: 52 x 43 x 13 mm with 5 m cable

### Connections

10 parallel analog/digital connections for interfacing various external devices (optional)

RS232 interface (RS485 optional)

### Interface

LCD display: 2 lines 16 character each (5x8MM per character)

Functional keyboard and easy-to-use push buttons

2 alarm push buttons for level-1 and level-2 emergency response

### Power

Input: 12 volt (24 volt optional)

Current draw: 100 mA receive mode, 350 mA (pulse) in transmit mode

External or internal backup battery (optional)

### Physical

Dimensions: 210 x 146 x 48 mm

Weight: ~700 grams

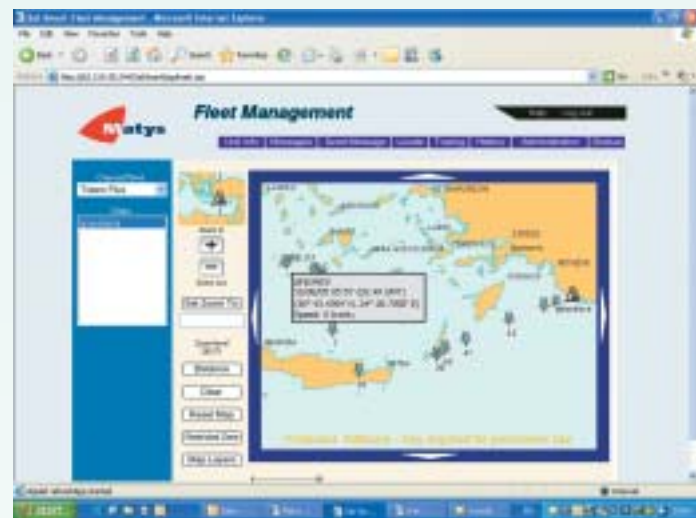
### Temperature

Operating: -10°C to +55°C

Storage: -20°C to +65°C

## SMART 9601 Configuration

Compact ■ Easy to install ■ User friendly



Web-Based Tracking

## About Matys

Matys develops, markets and supports unique marine telematics solutions. The company's flagship product line, **MatysOnBoard**, comprises state-of-the-art marine communications and monitoring solutions for commercial vessel operators and private yacht owners worldwide. A privately held company, Matys is a subsidiary of ITURAN, a leading international supplier of vehicle tracking and communications systems.



MatysOnBoard Ltd.

26 Hamelacha St., POB 1924, Holon 58117, Israel

Tel: +972 3 5575 800 Fax: +972 3 5575 822 Email: info@matysonboard.com

[www.matysonboard.com](http://www.matysonboard.com)